

PRODUCT DATA SHEET

Black Square Shower Wall Outlet Elbow

Product Code: BLACK004ORB



SCUDO
BEAUTIFUL BATHROOMS

0330 124 7290

sales@scudo.co.uk - www.scudo.co.uk

Scudo is the trading name of Harrison Bathrooms Ltd. Whilst we endeavour to ensure that the product information is accurate we accept no liability for any information given. All images are for illustration purposes only. Product images and specification are subject to change. Measurement are in millimetres and are nominal.

Product Measurements

| | |
|-----------------|--------|
| Product Weight: | 0.34kg |
| Product Width: | 50mm |
| Product Height: | 50mm |
| Product Depth: | N/A |
| Product Length: | 82mm |

Product Transportation

| | |
|--------------------|---------------|
| Barcode: | 5060500644246 |
| Country of Origin: | China |
| Comodity Code: | 7418200000 |

Primary Packed Measurements

| | |
|------------------|---------|
| Packaged Weight: | 0.354kg |
| Packaged Length: | 55mm |
| Packaged Width: | 55mm |
| Packaged Height: | 95mm |

Packaging Weight

| | |
|----------|--------|
| Card: | 0.05kg |
| Plastic: | N/A |

General Information

| | |
|------------------------|--------------|
| Construction Material: | Brass |
| Installation Type: | Wall Mounted |
| Colour / Finish: | Black |

Shower Specification

| | |
|----------------------------|---------|
| Anti-Scald: | No |
| Shower Diverter Functions: | N/A |
| Number of Outlets: | 1 |
| Thermo Temp Control: | N/A |
| Cool Touch: | No |
| Shower Handset Functions: | N/A |
| Minimum Working Pressure: | 0.2 |
| Maximum Working Pressure: | 5 |
| Shape: | Square |
| Pipe Centre: | N/A |
| Inlet Connection: | 1/2 BSP |
| Outlet Connection: | 1/2 BSP |
| Adjustable: | No |
| Adjustment: | N/A |
| Handle Type: | N/A |

Flow Rates

| | |
|----------------|-----|
| 0.2bar (l/min) | N/A |
| 0.5bar (l/min) | N/A |
| 1bar (l/min) | N/A |
| 2bar (l/min) | N/A |
| 3bar (l/min) | N/A |

Compliance DOP

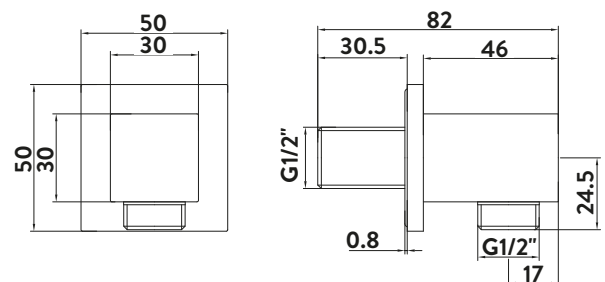
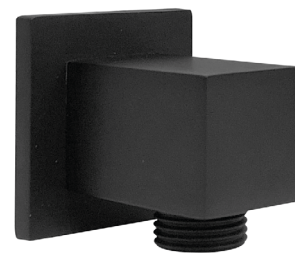
| | |
|--|--|
| | |
|--|--|

Spares

| | |
|-------------------------|-----|
| Diverter: | N/A |
| Thermostatic Cartridge: | N/A |

Tap Attributes

| | |
|-------------------------|---------------------|
| Tap Type Description: | Wall Mounted Outlet |
| Includes Waste: | N/A |
| Valve / Cartridge Type: | N/A |



Dimensions

(measurements in mm)



LIFETIME GUARANTEE

We are confident in our products and we want our customer to be, we proudly give a lifetime guarantee on our taps and showers, further details can be found on our website