

PRODUCT DATA SHEET

Apex Designer Radiator – 531 X 1800

Product Code: APEX18-53V-S-W

Product Name	APEX18-53V-S-W
Product Description	Apex Designer Radiator Single 1800mm x 531mm White
Product Transportation	
Barcode	5060766128801
Country of origin	CN
Commodity code	7322190000
Product Measurements	
Product Weight (KG)	20.9
Product Width (mm)	531
Product Height (mm)	1800
Product Depth (mm)	60
Product Length (mm)	0
Primary Packed Measurements	
Packaged Weight	23.7
Packed Length	1840
Packed Width	460
Packed Height	830
Packaging Weights	
Card (kg)	
Paper (g)	
Wood (kg)	
Plastic (kg)	
Compliance DOP	HBDOCH006

General Information	
Construction Material	Low carbon Steel
Installation type	Wall
Colour / Finish	Textured White
Heating Attributes	
Bar Arrangement	9
Number of Bars	9
Radiator Diameter (Ø)	60
RAL#	9016
Bar Diameter (Ø)	50*25mm
BTU @ 50°C	3035
Thermal Output @ 50°C (WATT's)	889
Element installation compatible	No
Water Content Volume	0
Max Projection (mm)	85
Selected element must not exceed the maximum BTU / Watt out put of the product Seek advice from a competent installer	
First Fix Dimensions	
Pipe Centres C1 (mm)	531+RV
Pipe Centres C2 (mm)	51+/-3

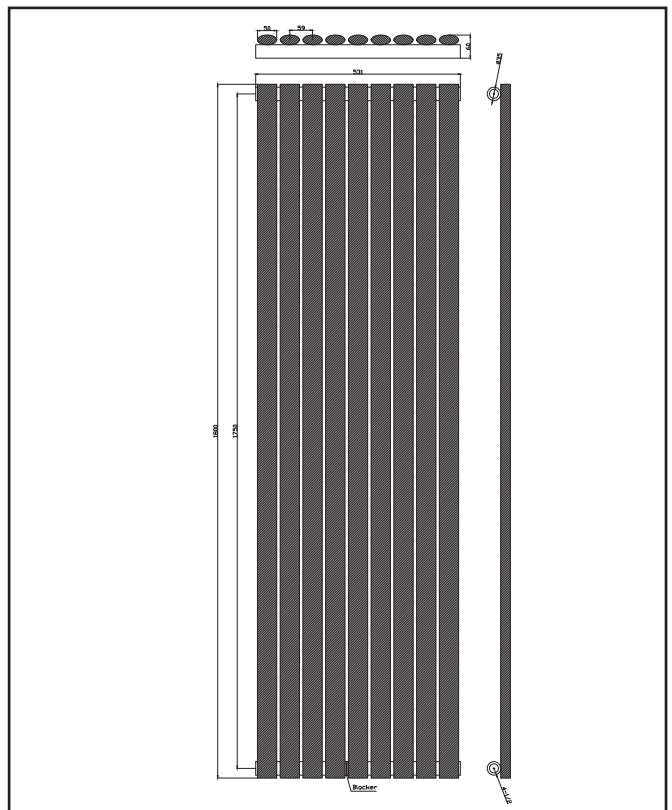
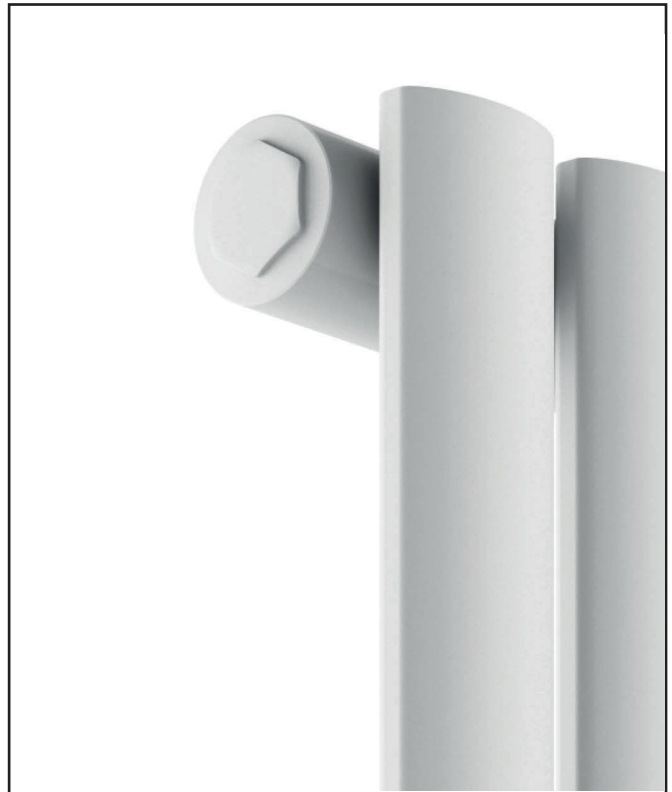


SCUDO
BEAUTIFUL BATHROOMS

0330 124 7290

sales@scudo.co.uk - www.scudo.co.uk

Scudo is the trading name of Harrison Bathrooms Ltd. Whilst we endeavour to ensure that the product information is accurate we accept no liability for any information given. All images are for illustration purposes only. Product images and specification are subject to change. Measurement are in millimetres and are nominal.



Dimensions
(measurements in mm)



LIFETIME GUARANTEE

We are confident in our products and we want our customer to be, we proudly give a lifetime guarantee on our taps and showers, further details can be found on our website.