



KINETIC

BASIN MIXER with pop-up waste

BASIN MIXER without pop-up waste

BIDET MIXER with pop-up waste

TALL BASIN MIXER without pop-up waste



Customer Services, Tavistock, Units 2 & 3, The Maltings Industrial Estate, Bath, BA1 3JL

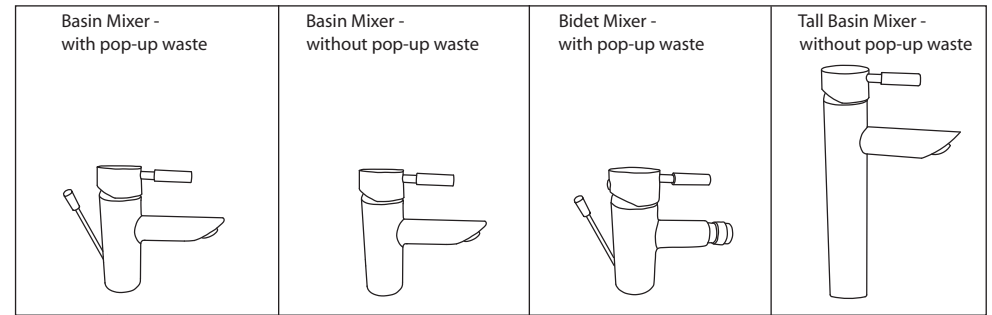
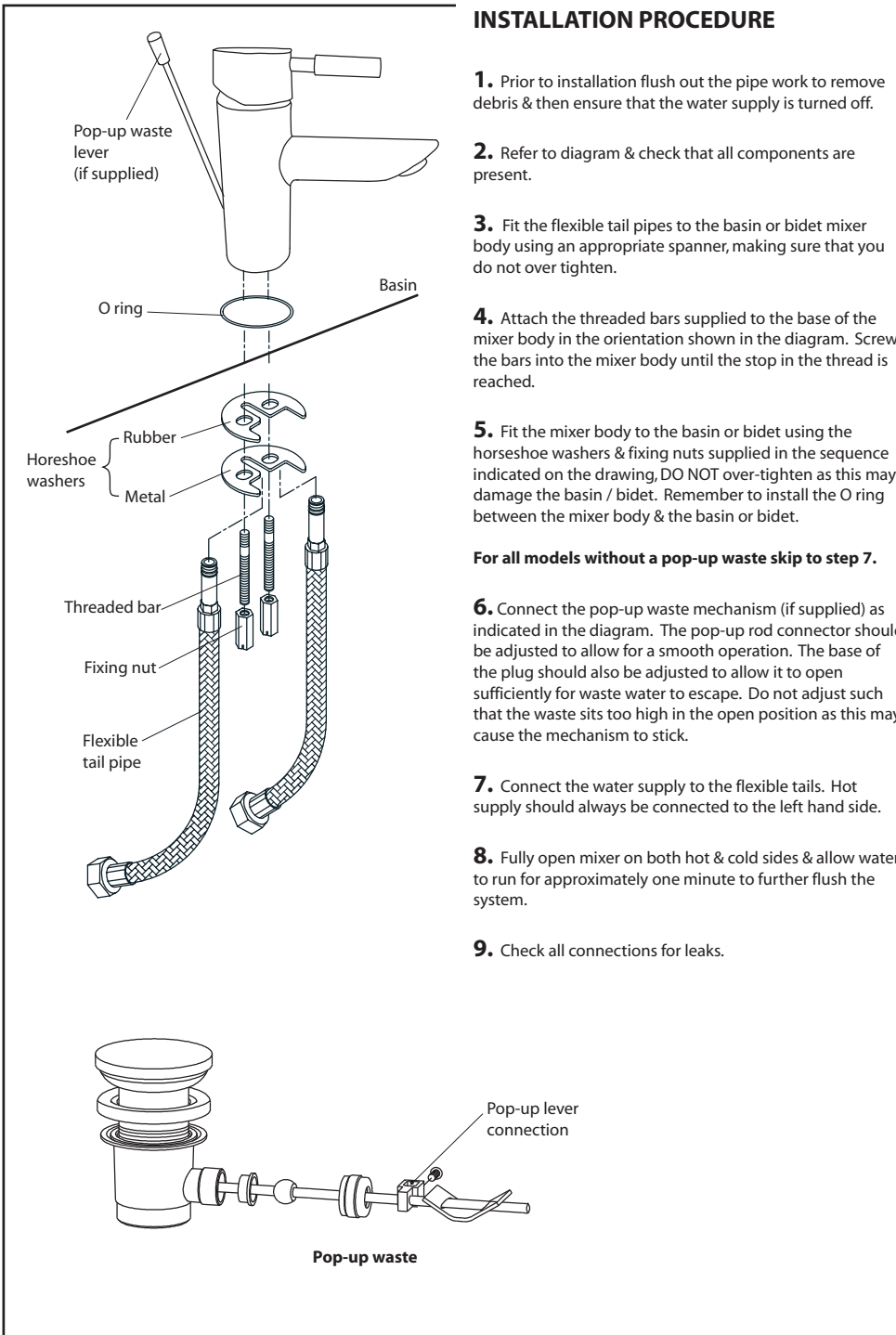
TEL: 01225 787870 | FAX: 01225 448877

Email: tavistock@roperrhodes.co.uk | Web: www.tavistock-bathrooms.co.uk

Tavistock is a division of Roper Rhodes Limited

Installation & Aftercare Instructions

Please retain for future reference



GENERAL NOTES

This mixer should be installed in accordance with water regulations. Approved check valves should be fitted where required. For further details please contact your local water authority. Should the mixer fail to operate effectively it may be that there is insufficient water pressure. Similarly, hot & cold water supplies should be relatively balanced for optimum performance. A reputable plumber will be able to advise on each of these issues.

AFTERCARE INSTRUCTIONS

Whilst this item has a high quality durable finish, it should nevertheless be treated with care. Surfaces should be cleaned using only a soft damp cloth and clean water & dried using a soft cotton cloth. Bath cleaning products, even non-scratch ones could damage the finished surface.

5-YEAR GUARANTEE

We have complete confidence in this Tavistock product and as such it is offered with a 5-year guarantee against defects in manufacture. The guarantee requires that this product be used in the manner for which it was intended and that it is installed & maintained in accordance with the fitting instructions and local water byelaws. The guarantee covers products in domestic use only. The guarantee is invalidated should the valve be damaged by water borne debris. Make sure that supply pipes are clear of any debris prior to installation, this is particularly important on new plumbing installations. In the unlikely event that this product should fail during the guarantee period we will either replace the faulty part or the complete unit as appropriate.