

BRISTAN

Bath Filler with Pop-Up Waste & Overflow

Installation Instructions & User Guide



IMPORTANT: Please keep these instructions for future reference and request of replacement parts

BRISTAN

Introduction

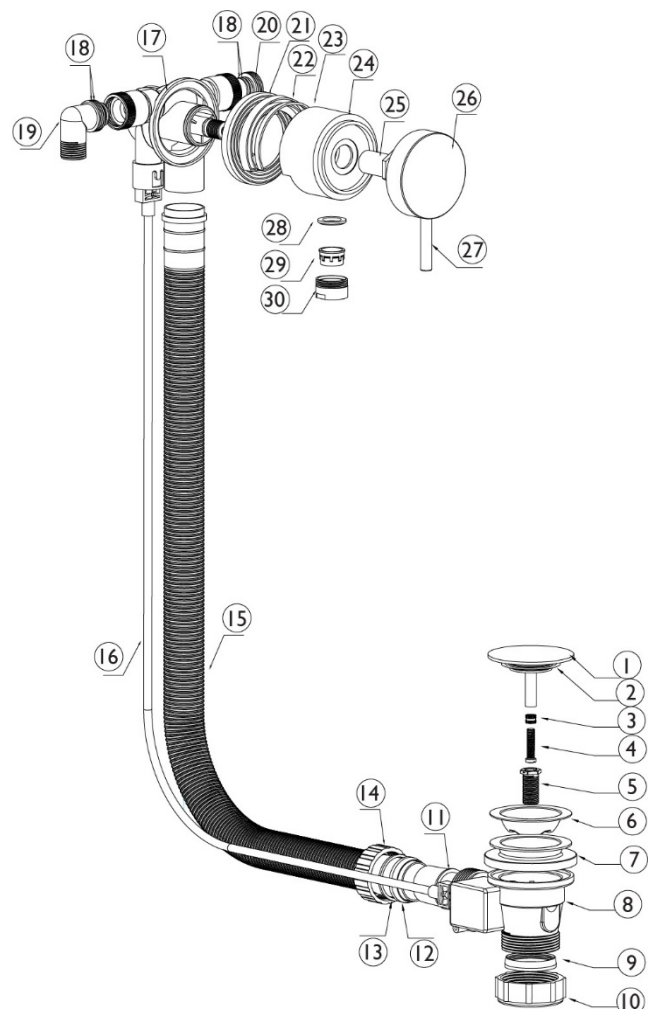
Thank you for choosing Bristan, the UK's leading taps and showers expert. We have designed this product with your enjoyment in mind. To ensure that it works to its full potential, it needs to be fitted correctly. These fitting instructions have been created to give you all of the information you need and, if you need any further help, please do not hesitate to give us a call on 0330 026 6273.

Installation

1. Identify all components are present prior to installation.
2. Fit the waste body (8) and flange (6) to the bath securing using screw (4) and washer (2); ensure sealing washer (7) is placed through the bath before this is done as shown on diagram. Use a pure Silicon sealant where necessary.
3. Fit the overflow/filler elbow (19) to the bath ensuring overflow washer (18) is in place. Secure to bath using o-ring (21), washer (22) and retaining nut (25). Use a pure Silicon sealant where necessary.
4. Connect flexible tube (16) to the waste body (8) using the plastic nut (14).
5. Connect the overflow elbow (17) to the flexible tube (15).
6. Fit the handle (26 & 27) to the control spindle by pushing on firmly.
7. Connect water supplies to inlets. The elbows (19) are 3/4" BSP. Two flexible connectors are supplied that can be used to connect the elbows to 22mm pipe work, depending on the installation. A blanking plug is also supplied to close off one inlet if mixed water is to be connected to the overflow filler.
8. Check all joints and connections for leaks.

Contents:

- | | |
|---------------------|-------------------|
| 1. Cover | 21. Rubber Washer |
| 2. Sealing Washer | 22. Washer |
| 3. Adjusting Nut | 23. Washer |
| 4. Adjusting Screw | 24. Filler Outer |
| 5. Flange Screw | 25. Lock Nut |
| 6. Flange | 26. Handle Cover |
| 7. Sealing Washer | 27. Handle Lever |
| 8. Waste Body | 28. Rubber Washer |
| 9. Conical Washer | 29. Bubbler |
| 10. Plastic Nut | 30. Outlet Nozzle |
| 11. Plastic Bush | |
| 12. Conical Washer | |
| 13. Plastic Washer | |
| 14. Plastic Nut | |
| 15. Plastic Tube | |
| 16. Pop-Up Assembly | |
| 17. Overflow Elbow | |
| 18. O Ring | |
| 19. Filler Elbow | |
| 20. End Stop | |



Cleaning & Maintenance

Your fitting has a high quality finish and should be treated with care to preserve the visible surfaces. All finishes will wear if not cleaned correctly. The only safe way to clean your product is to wipe with a soft damp cloth. Stains can be removed using washing up liquid. All bathroom cleaning product (powders and liquids) will damage the surface of your fitting, even the non-scratch cleaners.

NOTE:- Never use abrasive detergents or disinfectants or those containing alcohol, hydrochloric or phosphoric acid.

At Bristan, we want to make things as easy as possible for our customers. That's why we offer solid guarantees on all our products, effective from the date of purchase, to give you peace of mind.

To start your free guarantee, simply scan the QR code and register your product. Alternatively, visit www.bristan.com/register to register your product via a computer.

For full guarantee terms and conditions visit, www.bristan.com/guarantees



We Know & We Care

BRISTAN

This booklet covers product codes
W BATH09 C - Chrome

Helpline
0330 026 6273

Bristan Group Limited
Birch Coppice Business Park, Dordon, Tamworth, Staffordshire B78 1SG

A Masco Company

Website: www.bristan.com

Telephone: 0330 026 6273

Email: enquire@bristan.com